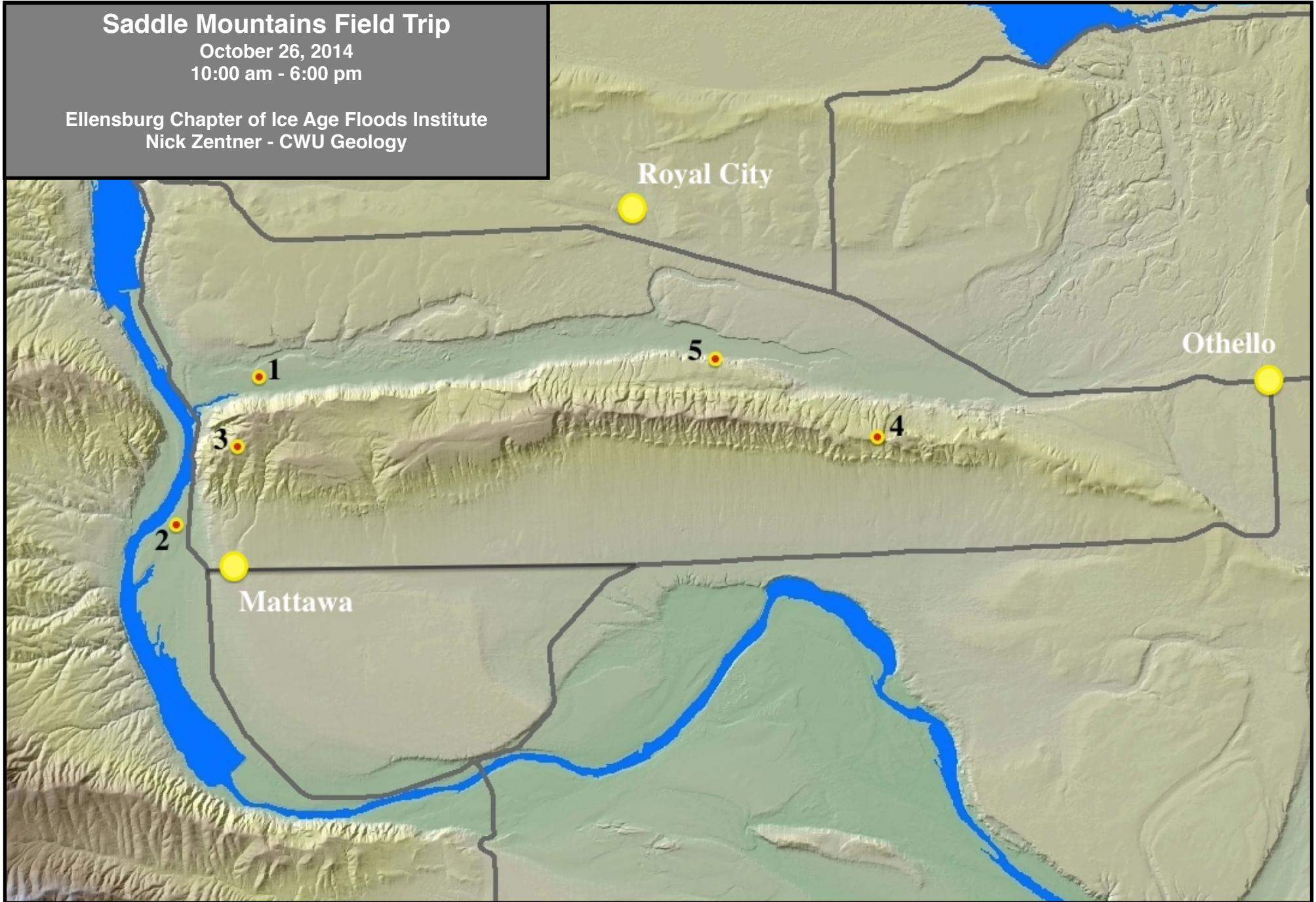
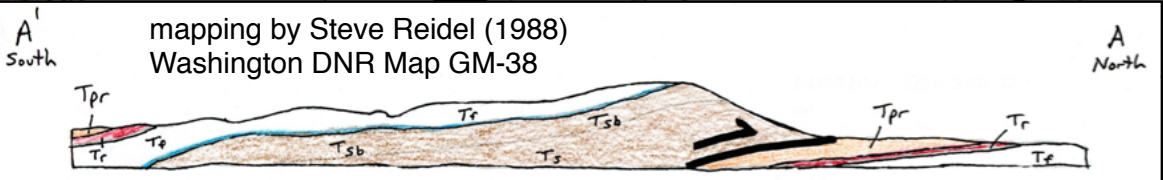
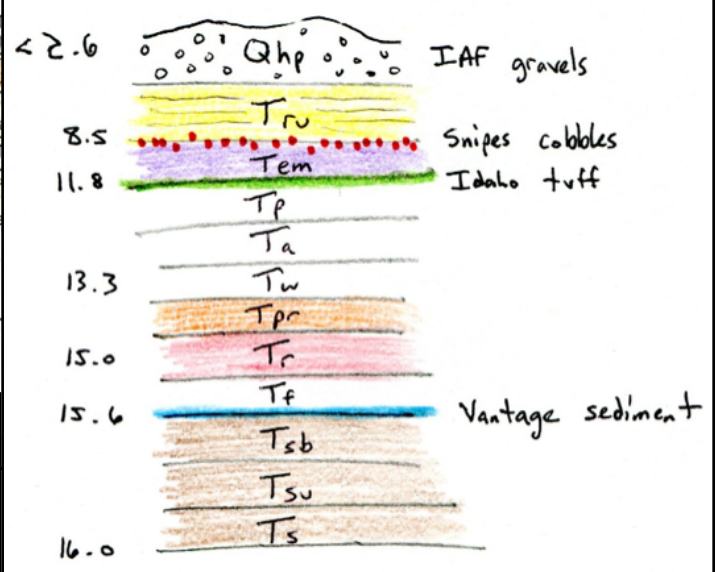
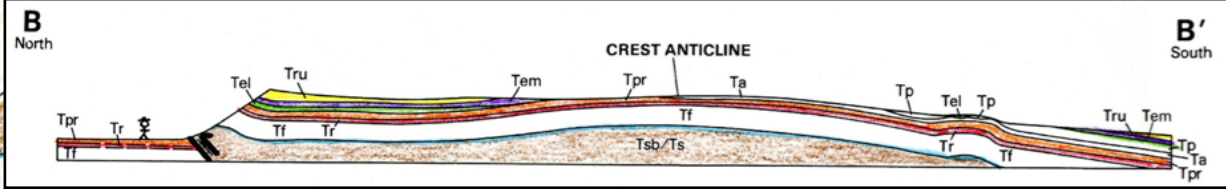


Saddle Mountains Field Trip

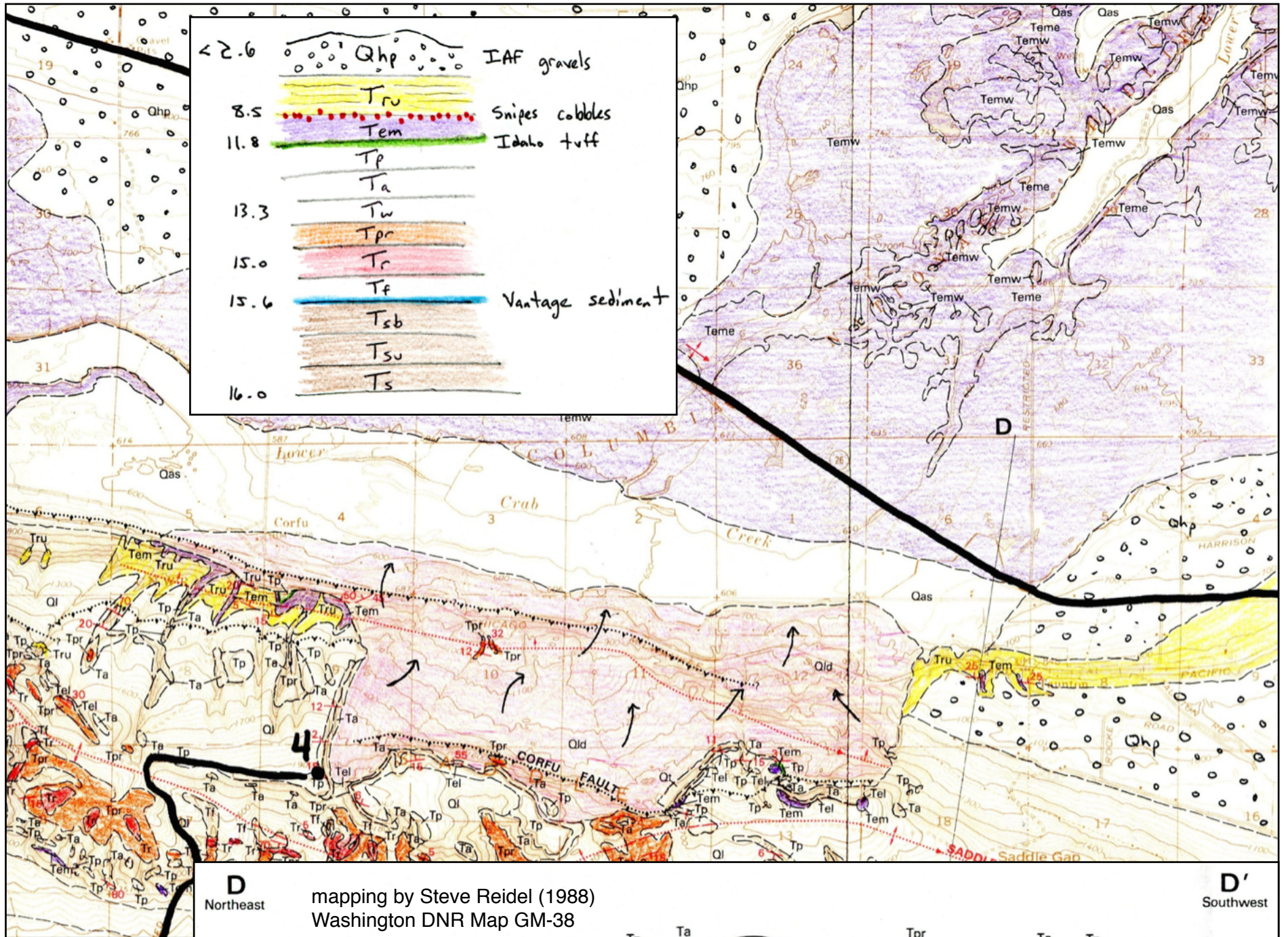
October 26, 2014
10:00 am - 6:00 pm

Ellensburg Chapter of Ice Age Floods Institute
Nick Zentner - CWU Geology





mapping by Steve Reidel (1988)
Washington DNR Map GM-38



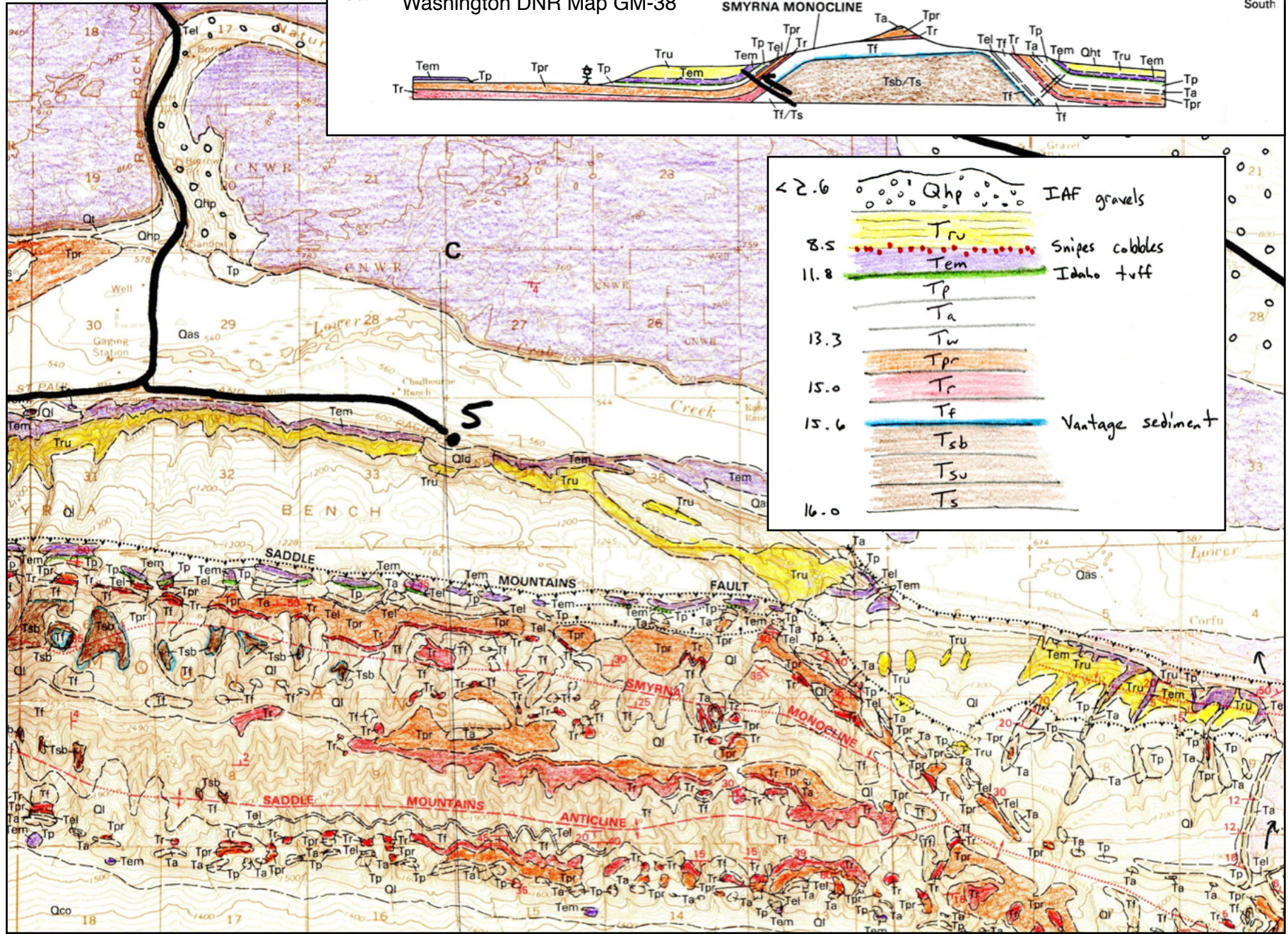
mapping by Steve Reidel (1988)
Washington DNR Map GM-38

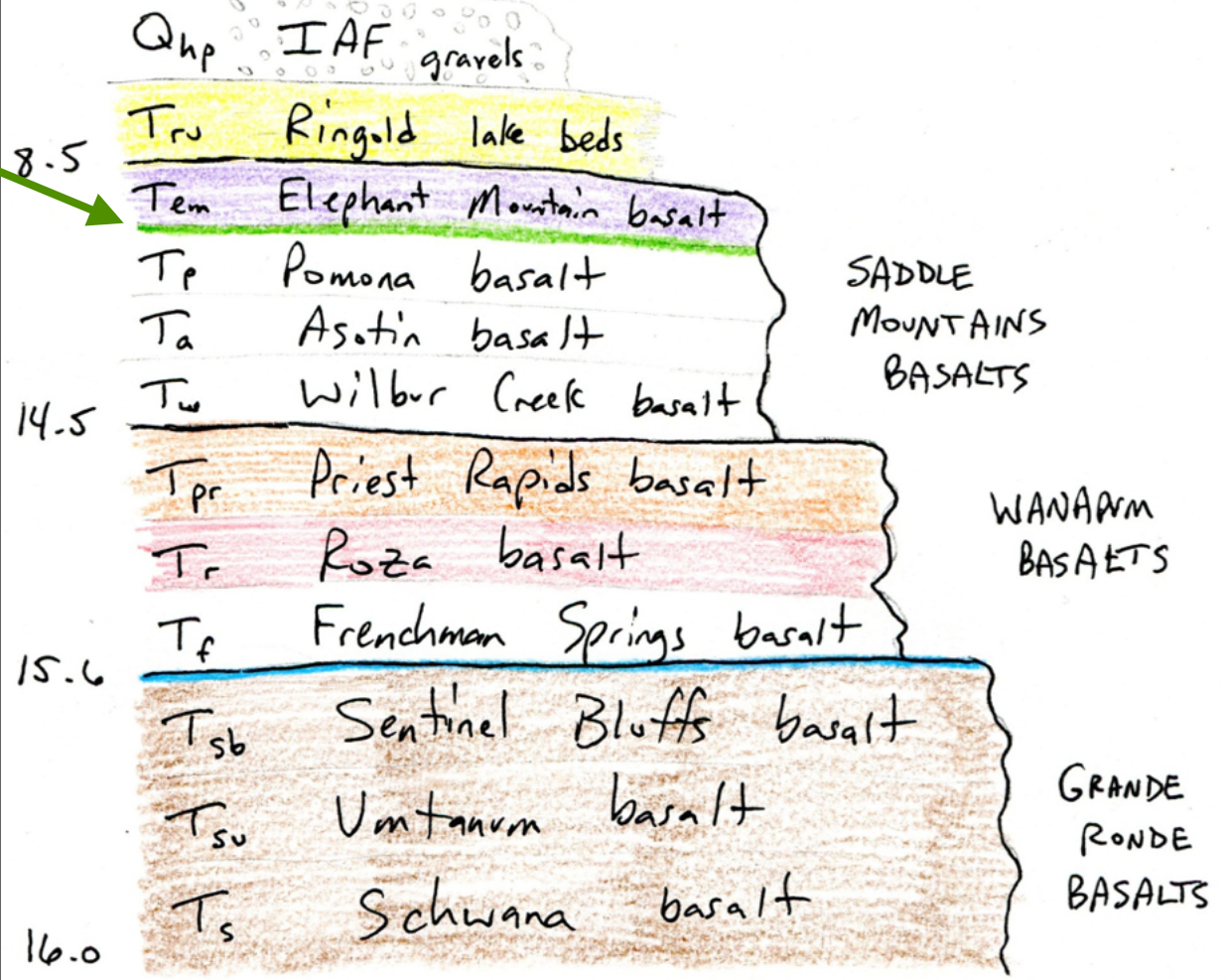
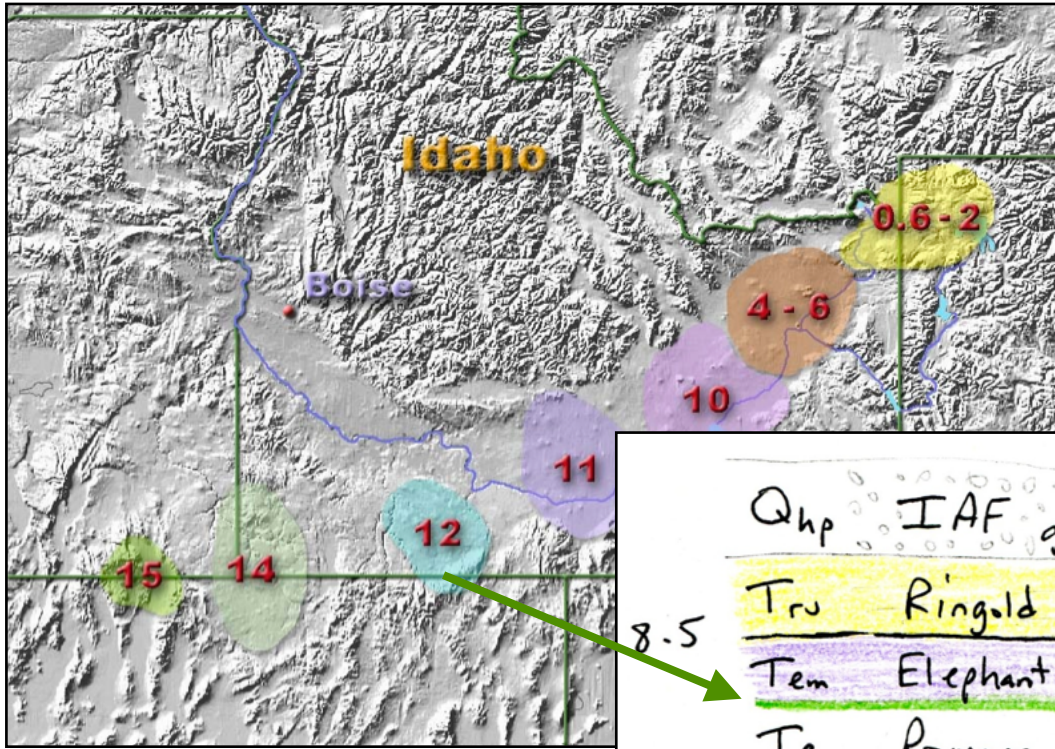
D
Northeast

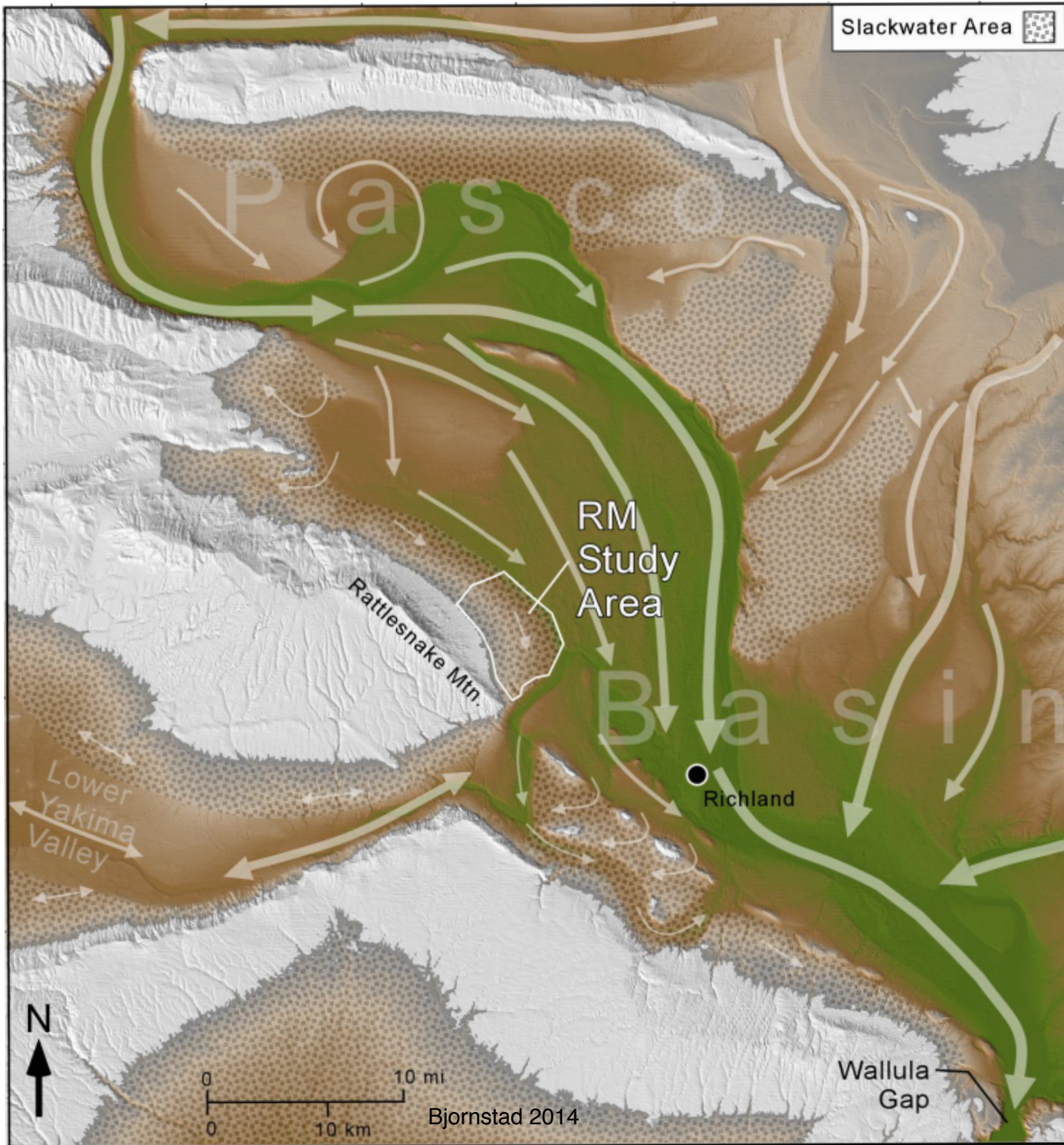
D'
Southwest

C mapping by Steve Reidel (1988)
Washington DNR Map GM-38

C' South







Ellensburg....I90E....WA 243S....left on Lower Crab Creek Road

1. Lenice Lake Parking Lot (523' elev) 11:00 am

N 46.83344 W 119.83325

WA 243S....right on Road 22.1 SW

2. J&S Grape Crushing Parking Lot (513' elev) 11:45 am

N 46.76558 W 119.93033

WA 243S....left on 24 SW....Mattawa....left on R SW Rd....veer left after canal....left at fork

3. Sentinel Gap Viewpoint (2071' elev) 12:45 pm

N 46.79697 W 119.91122

left on 24SW....left on 24E....left on gravel between MP 60 & MP 61....veer right at top

4. Corfu Landslide Viewpoint (1983' elev) 2:15 pm

N 46.79198 W 119.44607

left on 24E....left on 26W (Othello)....left on E RD SW (Shell Station)....left on gravel Lower Crab Creek Road for ~ 2 miles

5. Lower Crab Creek Coulee (635' elev)

3:45 pm N 46.83526 W 119.55923

west on Lower Crab Creek Road....right on WA 243N....I-90W....Ellensburg

