

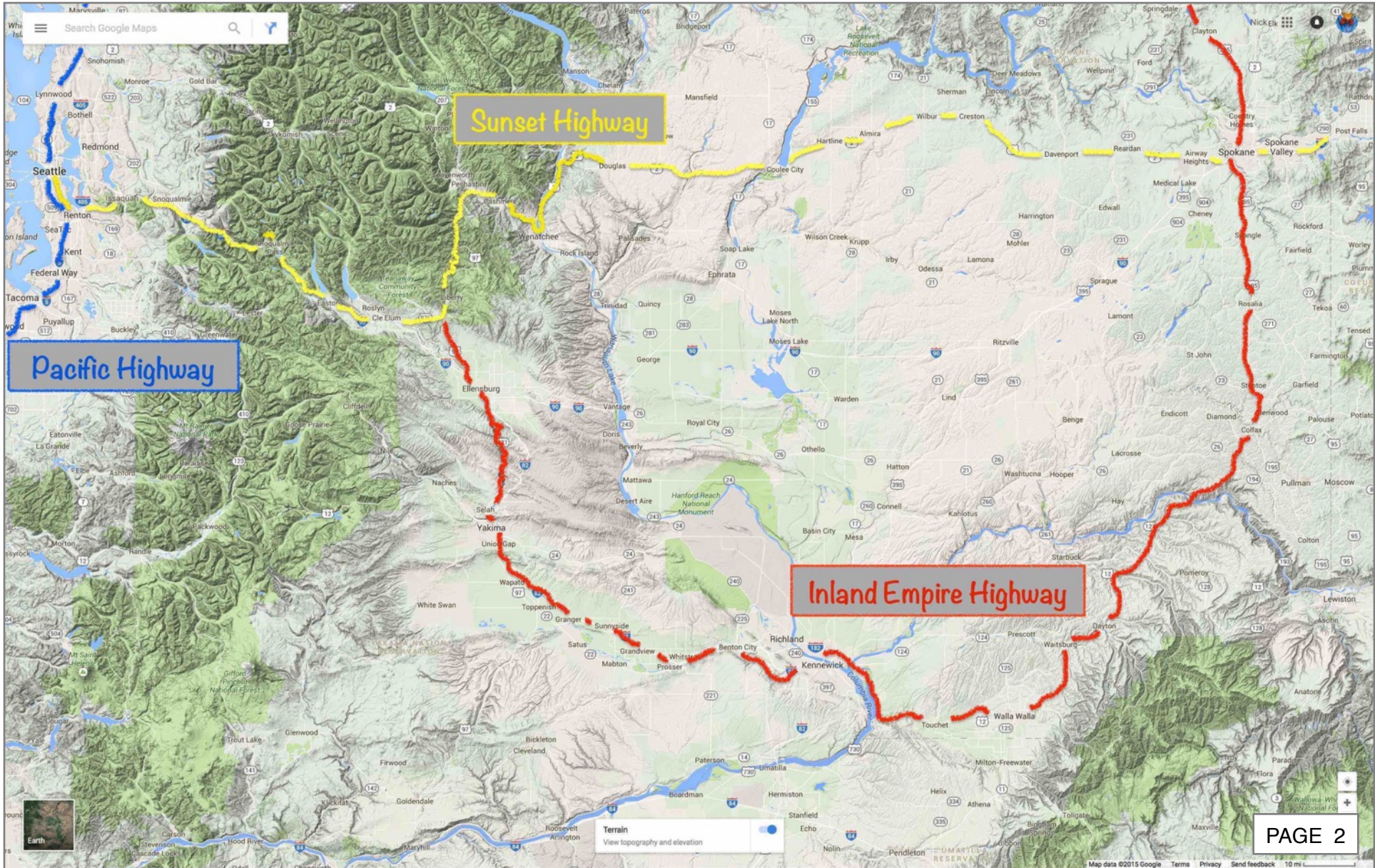
Old Blewett Field Trip  
September 27, 2015  
Nick Zentner, CWU Geology



- 11:30 am
- 1. Lauderdale Junction
  
- 12:15 pm
- 2. Liberty Town Hall
  
- 1:30 pm
- 3. Basalt Dike
  
- 2:15 pm
- 4. Echo Point
  
- 3:00 pm
- 5. Plant Fossils
  
- 4:00 pm
- 6. Conglomerate

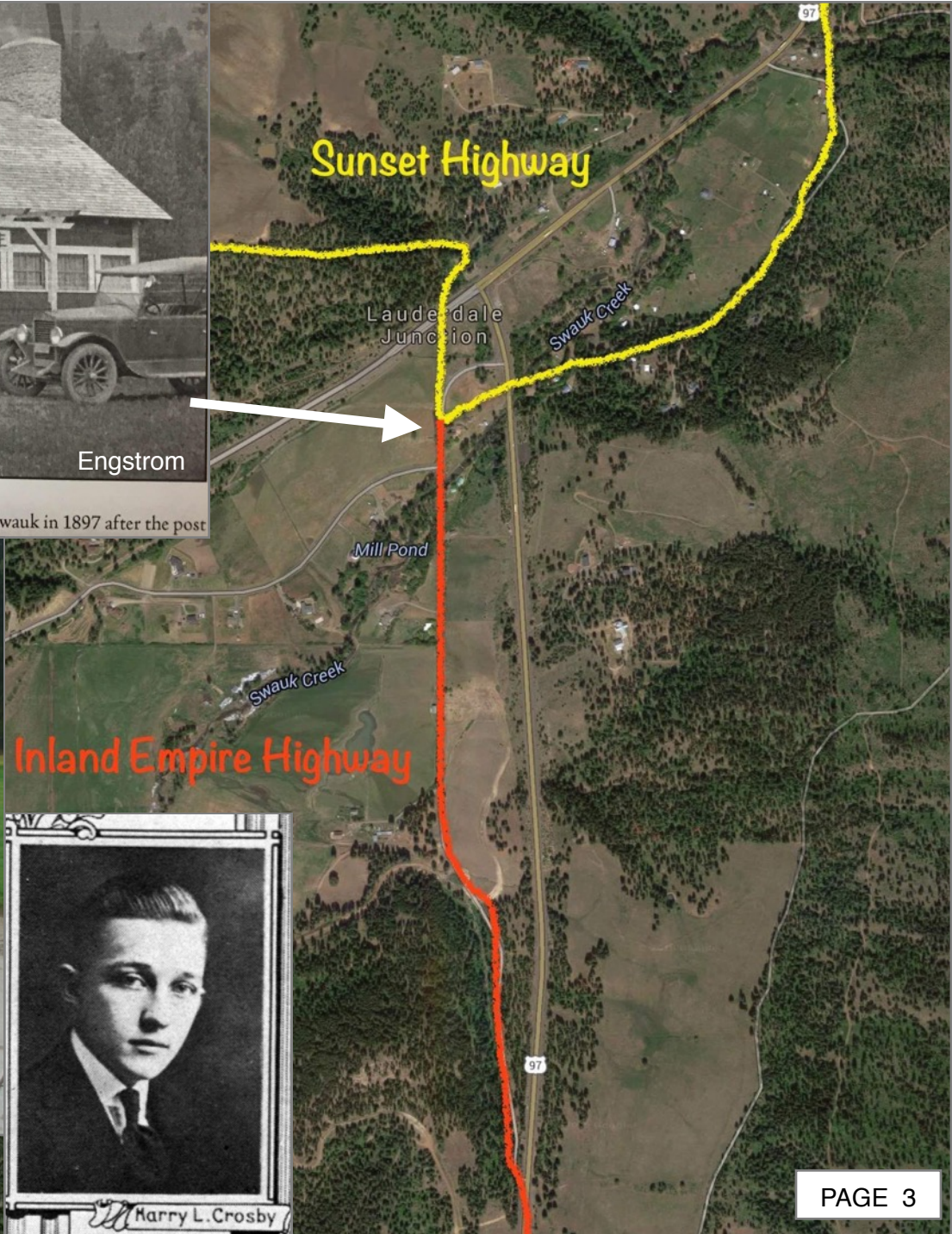
Old Blewett Pass

Blewett Pass



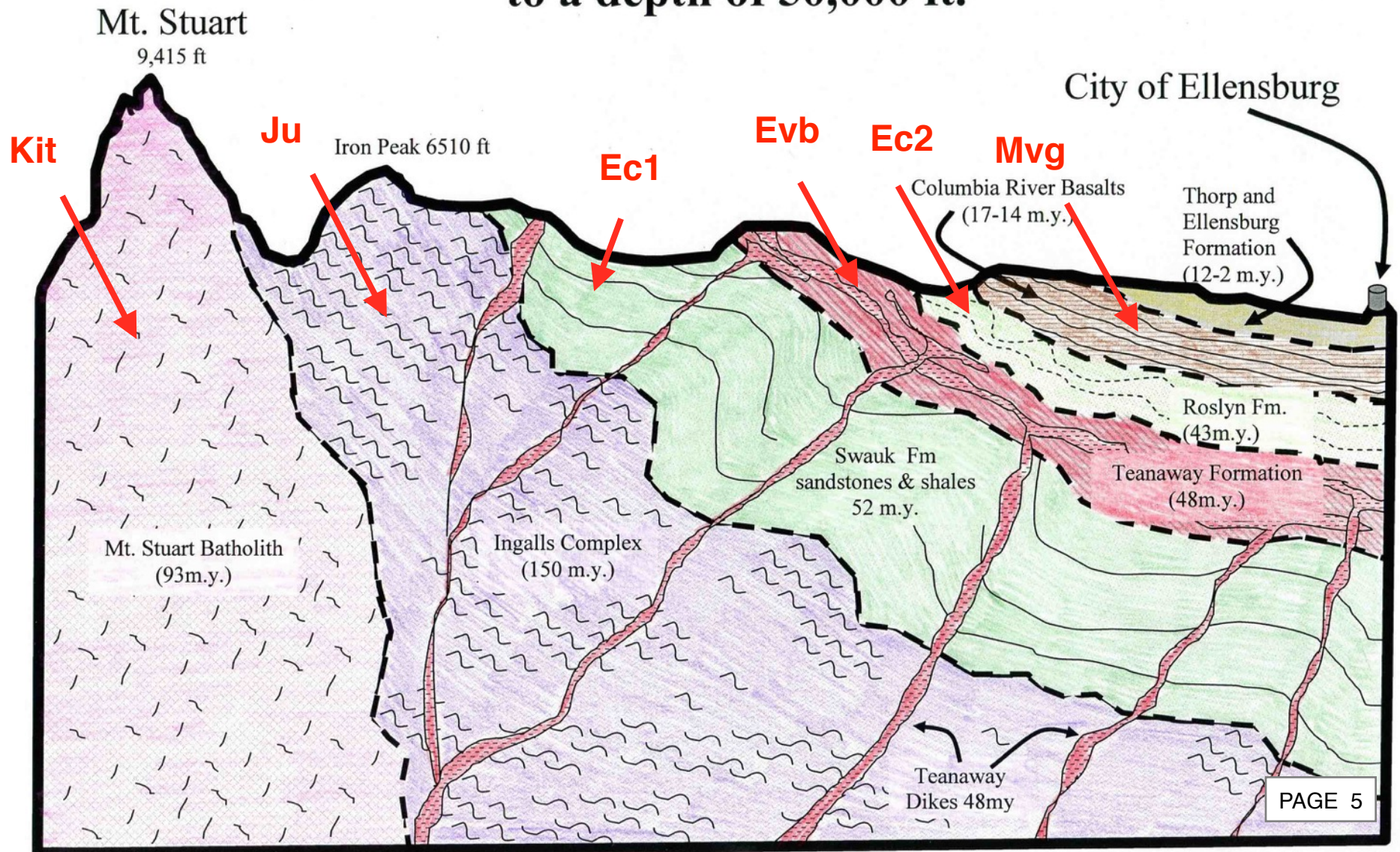


The Lauderdale Lodge—1921. Peter McCallum closed his post office and store on the Swauk in 1897 after the post office and stores had been established in Liberty starting in 1893.





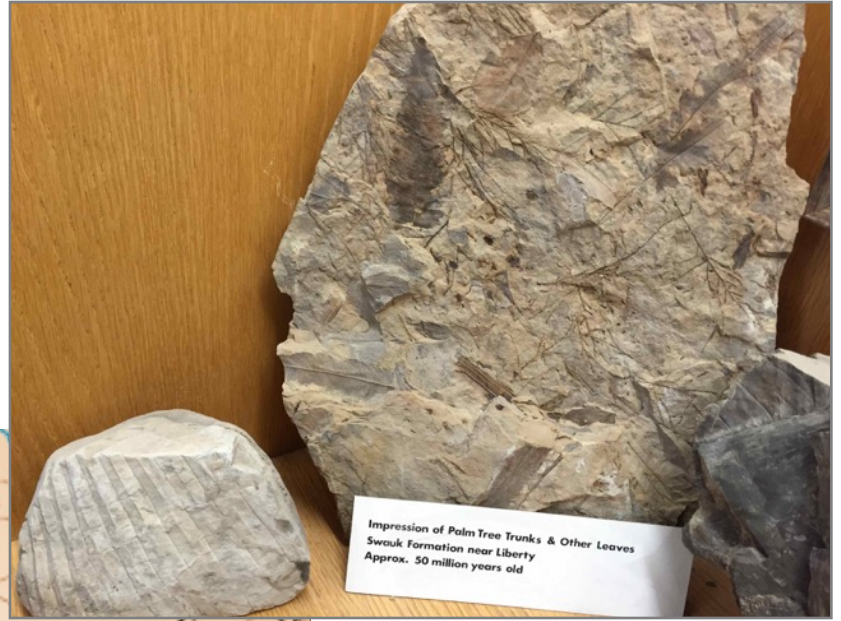
# Geologic Cross Section from Mt. Stuart to Ellensburg to a depth of 50,000 ft.



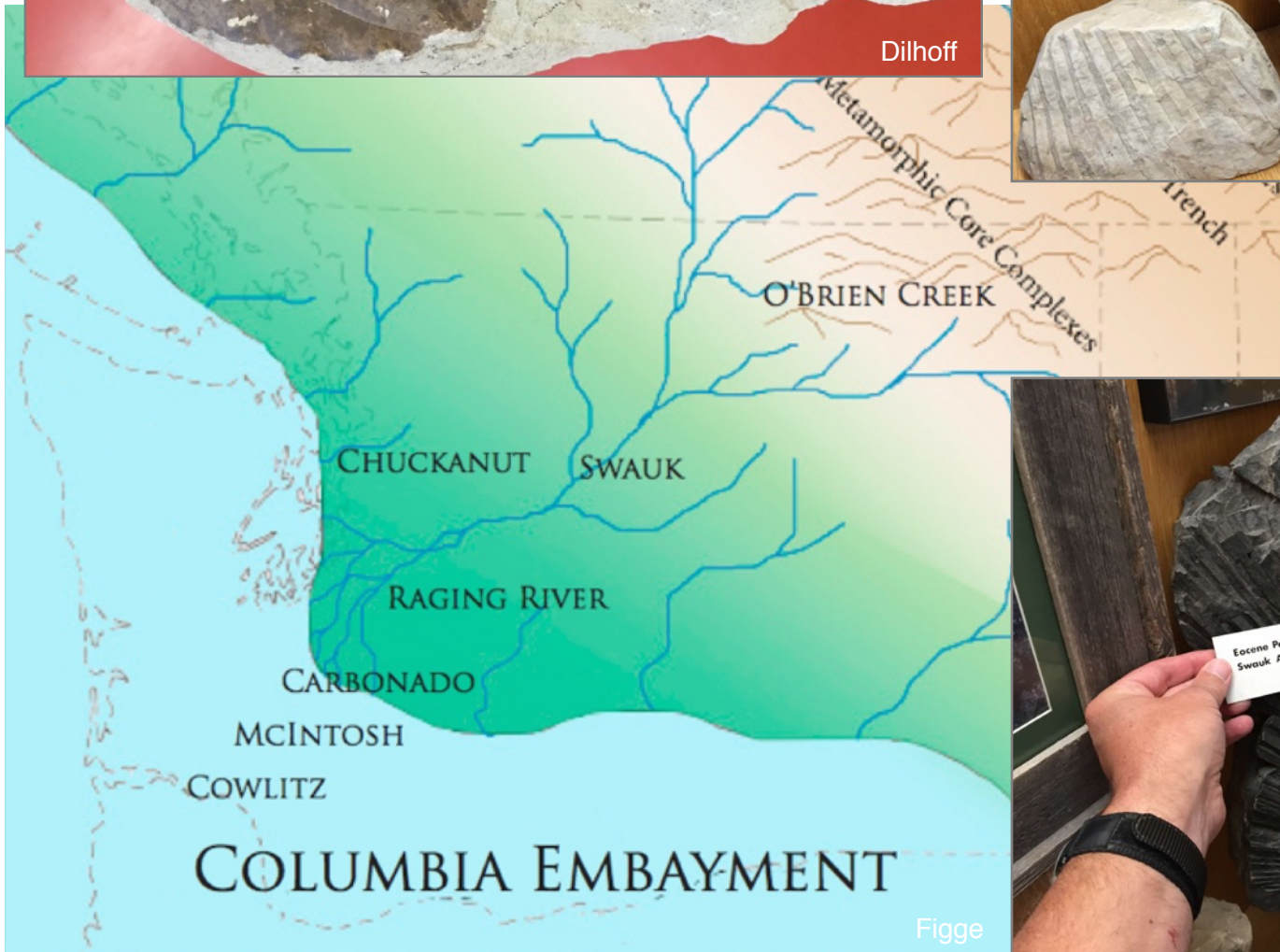
Powell



Dilhoff



Impression of Palm Tree Trunks & Other Leaves  
Swauk Formation near Liberty  
Approx. 50 million years old



Figge



Eocene Palm Frond  
Swauk Area - 18 miles north of Ellensburg



**'Hard Rock' Gold**



Repin

**'Placer' Gold**



Repin

**'Hard Rock' Blues**



**'Placer' Blues**

